

ARVAL VAN DAMAGE CHARGE MATRIX

JANUARY 2022



ARVAL
BNP PARIBAS GROUP

For the many journeys in life.

The following document is designed to give a clear understanding of acceptable and unacceptable damage to vehicles returned.



When vehicles are returned at the end of their contract, they should be in good condition. All electronic safety features and devices must be in working order. There should be no rust or corrosion. The vehicle must be roadworthy with a valid MOT and no warning lights should be illuminated. The vehicle must have been serviced according to the manufacturer's servicing/maintenance schedule. Tyres should not have any damage to sidewalls or tread.

To remove ambiguity around exactly what we mean by 'good condition', we use the British Vehicle Rental and Leasing Association's (BVRLA) 'Guide to Fair Wear and Tear'. These independent guidelines, reproduced with the permission of the BVRLA, allow us to apply fair and consistent standards to the condition of the vehicle at the end of the contract and determine whether any charges should apply.

[Access the full BVRLA Fair Wear and Tear Guides here](#)

These guides detail the standards for the contract hire and leasing industry. The BVRLA guide details the difference between non working zones & working zones, any surface that is subject to heavier wear and tear through conventional operation and use.

Costs are correct at the point this guide was published and may be subject to change. Please check with your Account Manager for the latest costs. These charges are not subject to VAT, with the exception of removing logos(see page 3). In this case, the VAT may be recoverable depending on your VAT position.

Sign writing and livery

Any decals, sign writing, logos, stickers or livery should be removed prior to return of the vehicle and should be done to a professional standard with any bodywork surface made good. If the vehicle is returned with any stickers / wraps etc, this will be removed prior to sale and the costs recharged to you.

Racking

Any removal of box bodies, curtain-side bodies, rear shutters and tail boards etc should be done to a professional standard and any grommets or drilled holes must be filled and treated against water penetration and rust.

Glossary

These terms will be used throughout the document. Please refer back to this for the explanation of the term.

Report Only

Any damage which is within BVRLA standards, but has been reported for information only.

PDR

Paintless Dent Removal, dents are pushed or pulled out to achieve a repair without the need to refinish the panel (not applicable on damage near edge of any door).

Refinish

Any chip or scratch which is outside BVLRA standards where a panel needs to be resprayed but no other work is required before painting.

Repair & Refinish

Any dent which is outside BVRLA standards where a panel needs to be repaired/filled before painting.

Replace

Any item that is missing or needs replacing as it cannot be repaired. Costs are based on the average price across the vehicle model range, the removal of the part and any connecting parts etc, repaint (where required) and refitting.

OEM

An Original Equipment Manufacturer (OEM) part means a part that was either made by a vehicle manufacturer or a subcontractor which is approved to produce a part of behalf of a vehicle manufacturer.

Excessive Damage

Damage beyond the point of repair where the damage is >3rd of a panel will be charged using OEM parts and labour times.

Poor Previous Repair

A substandard repair to panels, glass or trim that is obvious from a distance of 2 metres.

Specialist Repair

Localised repair that is more cost effective than replacement or full repair. Normally would have to be completed by a specialist. For example Alloy Wheel Smart Repair, Glass Repair, Trim Repair.

Gouge

Deep scratch that will require some filling to the base material to effect a satisfactory repair prior to refinish.

Swage Line

A line or crease on the side of a vehicle for aesthetic or aerodynamic purpose.

Contents

Body Panels	3
Bumpers (Front & Rear)	4
Mirror Covers	4
Glass	5
Wheels	6
Tyres	7
Keys	8
Servicing	8
Interior Trim	9
Exterior Trim	10
Multimedia	11
Removable items	11

Body Panels

Component	Fault	Tolerance based on BVRLA standard	Repair Method	Unit of Measure	Cost to Customer
Panels (Doors, Sills, including Side Doors, Wings, Bootlid, Bonnet, Roof)	Chipped	<8mm in diameter as long as there are no more than four on any panel, six per door edge and eight on any forward-facing panel	Report only	Per Panel	£0
	Chipped	>8mm in diameter or where there are more than four on any panel, six per door edge and eight on any forward-facing panel	Refinish	Per Panel	£150
	Dents	<15mm in diameter are acceptable providing there are no more than two per panel and the paint surface is not broken or on the roof / swage line	Report only	Per Panel	£0
	Dents	>15mm in diameter and less than 100mm with no paint damage and not to roof / swage line	PDR (Cold Metal Repair)	Per Panel	£67
	Dents	>15mm in diameter with paint damage or on roof / swage line	Repair & Refinish	Per Panel	£217
	Scratched	<50mm where no primer or bare metal is showing / any surface scratches providing there are no more than 4 scratches on any panel	Report only	Per Panel	£0
	Scratched	>50mm or where the primer or bare metal is showing or where there are more than 4 scratches on any panel	Refinish	Per Panel	£150
	Damage	Excessive Damage (see glossary page)	Replace	Per Panel	Based on OEM price
	Sign writing, wraps, decal, logo or stickers	Should be removed without damage to paintwork. If left on we will remove these and recharge the costs to you.	Remove & repaired	Size of decal	See table below

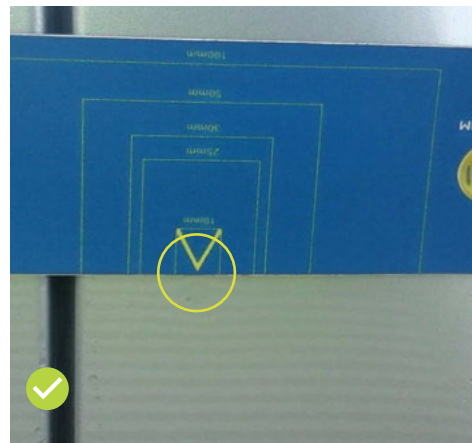
Arval's de-logo tariff

Full wraps are charged based on process and hourly rate.

	1 SQM	2 SQM	3 SQM	4 SQM	5 SQM	6 SQM	7 SQM	8 SQM
Excluding VAT	£19.50	£39.00	£58.50	£78.00	£96.50	£116.00	£135.50	£155.00
Including VAT	£23.40	£46.80	£70.20	£93.60	£115.80	£139.20	£162.60	£186.00



Small areas of chipping, including door edge chipping, are acceptable.



Dents up to 15mm in diameter are acceptable provided there are no more than two per panel and the paint surface is not broken.



Dents over 15mm in diameter, or any dents to the roof or swage line on any panels, are not acceptable.



Scratches and abrasions over 25mm are not acceptable. Any scratch where the primer or base metal is shown will also be recharged.

Black and white striped boards (zebra boards) are often reflected in the body panel. The stripes distort when there is a dent on the panel making it easier to see in a photograph.

Bumpers (Front & Rear)

Component	Fault	Tolerance based on BVRLA standard	Repair Method	Unit of Measure	Cost to Customer
Bumper	Chipped	<8mm in diameter as long as there are no more than four on any panel, six per door edge and eight on any forward-facing panel	Report only	Per Panel	£0
	Chipped	>8mm in diameter or where there are more than four on any panel, six per door edge and eight on any forward-facing panel	Refinish	Per Panel	£89
	Dents	<15mm in diameter are acceptable providing there are no more than two per panel and the paint surface is not broken	Report only	Per Panel	£0
	Dents	>15mm or where the paint surface is broken is not acceptable	Repair & Refinish	Per Panel	£178
	Scratched	<50mm where no primer or bare metal is showing / any surface scratches	Report only	Per Panel	£0
	Scratched	>50mm or where the primer or bare metal is showing	Refinish	Per Panel	£89
	Damage	Excessive Damage	Replace	Per Panel	Based on OEM price

Mirror Covers



Component	Fault	Tolerance based on BVRLA standard	Repair Method	Unit of Measure	Cost to Customer
Mirror cover/ glass	Missing	Missing, cracked or damaged door mirrors are not acceptable	Replace	Per Cover	Based on OEM price
	Scratched	Scratched	Refinish	Per Cover	£54

Glass

Component	Fault	Tolerance based on BVRLA standard	Repair Method	Unit of Measure	Cost to Customer
Front Screen	Chips/Cracks	Repaired chips are acceptable provided they are done to a professional standard	Report only	Per Screen	£0
Front Screen	Chips/Cracks	Unrepaired chips, cracks or holes up to 10mm are not acceptable	Glass Repair	Per Screen	£45
Front Screen	Chips/Cracks	Unrepaired chips, cracks or holes more than 10mm are not acceptable	Replace	Per Screen	Based on OEM price
Rear Screen	Chips/Cracks	Repaired chips are acceptable provided they are done to a professional standard	Report only	Per Screen	£0
Rear Screen	Chips/Cracks	Unrepaired chips, cracks or holes up to 10mm are not acceptable	Glass Repair	Per Screen	£45
Rear Screen	Chips/Cracks	Unrepaired chips, cracks or holes more than 10mm are not acceptable	Replace	Per Screen	Based on OEM price
Door Glass	Damage	Shattered	Replace	Per Glass	Based on OEM price
Lamps (Head, Rear, Fog etc)	Damage	Lens Holed, cracked or damaged are not acceptable	Replace	Per Item	Based on OEM price



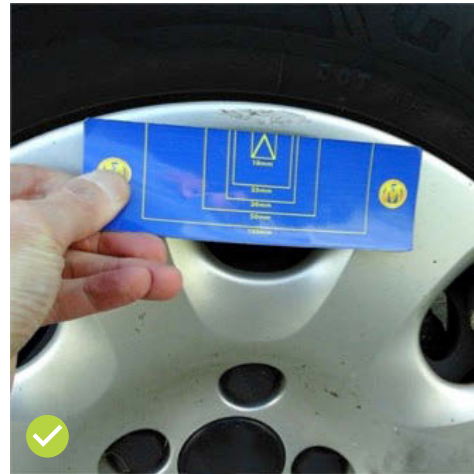
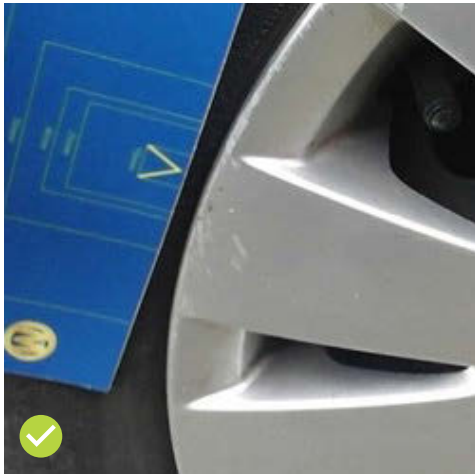
Repaired chips are acceptable provided they are done to a professional standard.

Unrepaired chips, cracks or holes up to 10mm are not acceptable and will require a Glass Repair.

Unrepaired chips, cracks or holes more than 10mm are not acceptable and will require a replacement windscreen.

Wheels

Component	Fault	Tolerance based on BVRLA standard	Repair Method	Unit of Measure	Cost to Customer
Alloy Wheel/Wheel Trim	Scuffs/Gouged	<50mm on the total wheel circumference and where no damage is on the wheel spokes	Report only	Per Wheel	£0
Alloy Wheel/Wheel Trim	Scuffs/Gouged	>50mm on the total wheel circumference or where there is any damage to the wheel spokes	Specialist Repair	Per Wheel	£67
Steel Wheel	Damage	Dents and holes on wheel rims are not acceptable	Replace	Per Wheel	Based on OEM price
Wheel Trim	Missing	Missing wheel trims are not acceptable	Replace	Per Wheel Trim	Based on OEM price



Scuffs to wheels totalling up to 50mm on the total circumference of the wheel trim, and on alloy wheels, are acceptable.



Scuffs over 50mm on the total circumference of the wheel are not acceptable. Any damage to the wheel spokes, the hub of the alloy wheel or the tyre side wall is not acceptable.



Tyres



Tyre side wall damage is not acceptable.

Component	Fault	Tolerance based on BVRLA standard	Repair Method	Unit of Measure	Cost to Customer
Tyre	Worn	All tyres, including any spare, must meet minimum UK legal requirements	Replace	Per Tyre	£111
Tyre	Damage	There must be no damage to sidewall or tread	Replace	Per Tyre	£111
Tyre	Incorrect size/specification	All tyres, including any spare, must comply with the vehicle manufacturer recommendation of tyre type, size and speed rating	Replace	Per Tyre	£111
Spare Tyre	Missing	The spare wheel (including spacesaver), jack and other tools must be intact, stowed properly and in good working order	Replace	Per Tyre	£111
Tyre repair compressor	Missing	The emergency tyre inflation kit, if supplied when new, should be in full working order, serviceable and ready for use	Replace	Per Item	Based on OEM price

If tyres form part of your contract please arrange for any tyre replacement before collection otherwise you will be liable for the above charges.



Keys

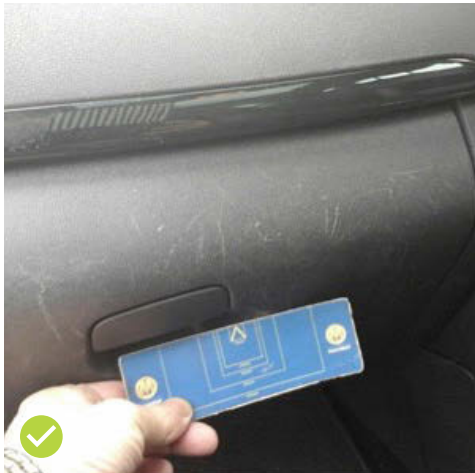
Component	Fault	Tolerance based on BVRLA standard	Repair Method	Unit of Measure	Cost to Customer
Keys – including spares	Missing	A full set of keys, including the remote ignition key, should be returned in working order if originally supplied	Replace	Per Key	*Based on AA Key Assist price
Locking Alloy Wheel Nut Key	Missing	Locking wheel nut keys, should be returned if originally supplied	Replace	Per Key	£50

Servicing

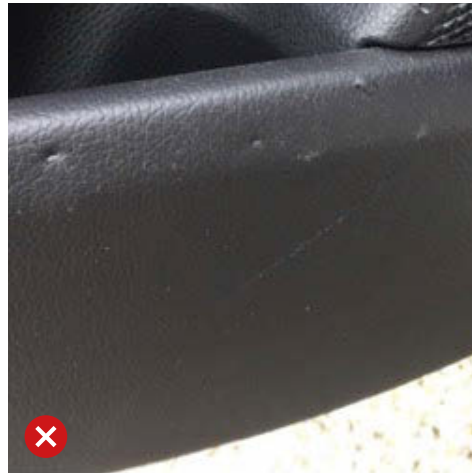
Component	Fault	Tolerance based on BVRLA standard	Repair Method	Unit of Measure	Cost to Customer
Service Book / Information	Missing / Incomplete	Must be serviced according to the manufacturer servicing/maintenance schedule and where supplied the service book must be present and date-stamped by an authorised service agent. If the service book is electronic ensure this is updated according to the manufacturer servicing/maintenance schedule.	Replace	Per Vehicle	£111

Interior Trim

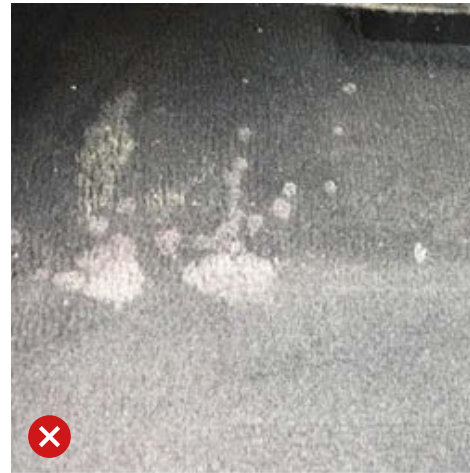
Component	Fault	Tolerance based on BVRLA standard	Repair Method	Unit of Measure	Cost to Customer
Interior Trim (seats, carpets, door trim, dashboards etc)	Excessively Soiled	Interior must be returned clean and odourless with no burns, scratches, tears, dents or staining	Clean	Per Vehicle	£67
	Missing	All interior fittings must be present	Replace	Per Vehicle	Based on OEM price
	Torn/Cut/Burn	Interior fittings <10mm are not acceptable	Trim Repair	Per Item	£54
	Torn/Cut/Burn	Interior fittings >10mm are not acceptable	Replace	Per Item	Based on OEM price
	Broken	All interior fittings must not be damaged/broken	Replace	Per Item	Based on OEM price



Scratches that reflect normal use are acceptable.



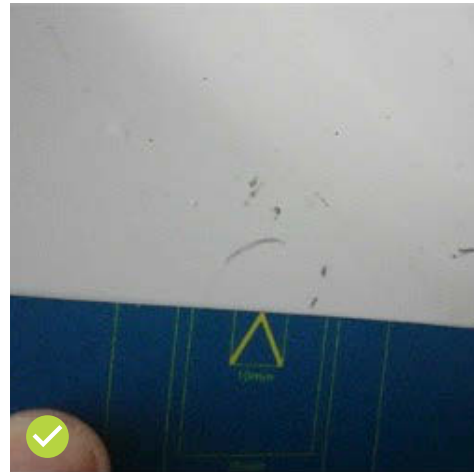
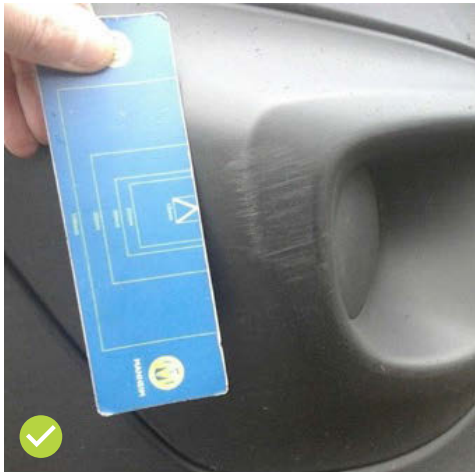
Holes to the interior upholstery and trim and not acceptable.



The interior of the vehicle must be clean and odourless with no burns, scratches, tears, dents or staining.

Exterior Trim

Component	Fault	Tolerance based on BVRLA standard	Repair Method	Unit of Measure	Cost to Customer
Exterior Trim (Mouldings etc)	Scuffs/Gouged/ Scratched	Scuffs, gouges and scratches <25mm are acceptable providing the moulding or trim is not broken, cracked or deformed	Report only	Per Vehicle	£0
	Scuffs/Gouged/ Scratched	Scuffs, gouges and scratches >25mm are not acceptable	Specialist Repair	Per item	£54
	Missing	All mouldings must be present	Replace	Per Item	Based on OEM price
	Damage	Moulding, trim should not be broken, cracked or deformed	Replace	Per Item	Based on OEM price



Scratches that reflect normal use are acceptable.



Multimedia

Component	Fault	Tolerance based on BVRLA standard	Repair Method	Unit of Measure	Cost to Customer
Multimedia	Missing/Broken	All original equipment, accessories and controls must be present and operate correctly	Replace	Per Item	Based on OEM price

Removable items

Component	Fault	Tolerance based on BVRLA standard	Repair Method	Unit of Measure	Cost to Customer
Removable items (load covers, headrests, sat nav discs, SD cards etc)	Missing	All original equipment, accessories and controls must be present and operate correctly	Replace	Per Item	Based on OEM price
Charging Cables	Missing	All original equipment, accessories and controls must be present and operate correctly	Replace	Per Item	Based on OEM price

Costs are correct as at April 2021 and may be subject to change. Please check with your Account Manager for the latest costs.



Arval UK Limited (Whitehill House, Windmill Hill, Swindon, SN5 6PE. Registration number 1073098. VAT Registration GB 202 1441 76)
is authorised and regulated by the Financial Conduct Authority | Email: info@arval.co.uk | Telephone: 01793 887000

TC 2254.01/22



ARVAL
BNP PARIBAS GROUP

For the many journeys in life.